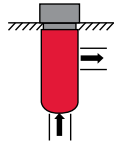


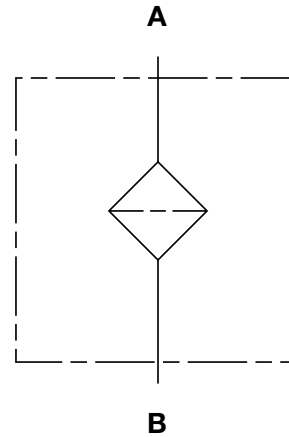
HIGH PRESSURE FILTERS

CP-C16 Series

Circuit Protector Manifold Cartridge Filters
3000 psi • up to 12 gpm



Hydraulic Symbol



Features

- Simple cost effective method of component protection with minimal space requirements, eliminating design restraints.
- Fits into a standard manifold Cavity No. C16-2 Port.
- CP Circuit Protector Filters provide backup protection when upstream pressure filters go into bypass or if element damage occurs.
- Two (2) different element options: 10 micron, and 141 micron allow filter to be tailored to individual application needs.
- Suitable for petroleum based fluids.
- Flow Path - inside to outside.

Technical Specifications

Mounting Method	C16-2 Cavity (SAE-16 Threaded Port)	
Flow Direction	Inlet: Bottom	Outlet: Side
Construction Materials	Steel	
Flow Capacity	12 gpm (45 lpm)	
Housing Pressure Rating	Max. Allowable Working Pressure 3000 psi (210 bar)	
	Fatigue Pressure Contact HYDAC Office	
	Burst Pressure Contact HYDAC Office	
Element Collapse Pressure Rating	W/HC 250 psid (17 bar)	
Fluid Temperature Range	14°F to 212°F (-10°C to 100°C) Consult HYDAC for applications operating below 14°F (-10°C)	
Fluid Compatibility	Compatible with all petroleum oils rated for use with Nitrile rubber (NBR) seals.	

Applications



Agricultural



Automotive



Construction

Model Code

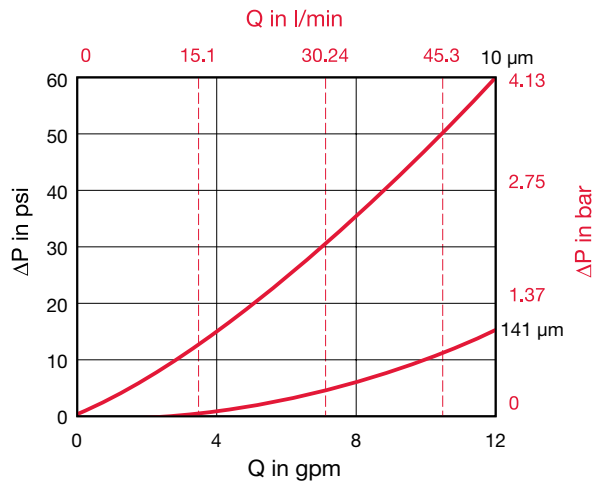
CP-C16 W 40 G 10 W 1 . 0 / 12

Filter Type	CP-C16 = Circuit Protector (Common Cavity No. C16-2)
Element Media	W = Wire Mesh
Size	40
Inline Port	G = 1" Male Thread 1 5/16-12UN-2A (SAE-16)
Filtration Rating (micron)	10 = 10 micron 141 = 141 micron
Bypass Indicator	W = No indicator Port
Type Number	1 = Standard Configuration
Modification Number	
Port Configuration	12
Seals	(omit) = Nitrile rubber (NBR) (standard) V = Fluorocarbon elastomer (FKM)

Model Codes Containing RED are non-stock items — Minimum quantities may apply — Contact HYDAC for information and availability

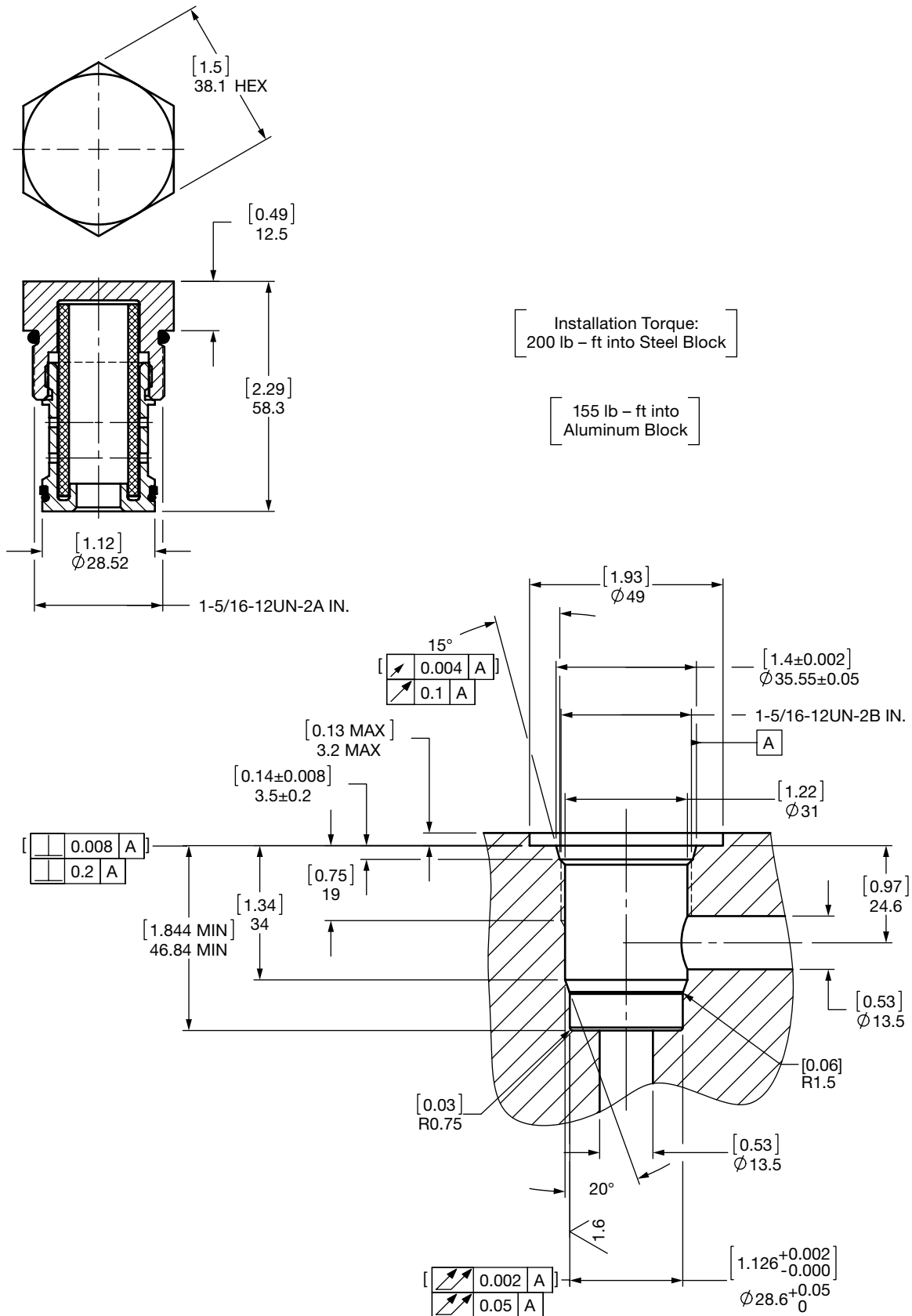
Pressure Drop Curves

Based on testing conducted with 150 SUS fluid at 105°F.



HIGH PRESSURE FILTERS

Dimensions CP-C16



Size	40
Weight (lbs.)	0.75

Dimensions shown are [inches] millimeters for general information and overall envelope size only. Weights listed include element.
 For complete dimensions please contact HYDAC to request a certified print.

