



621/622 SERIES

- Vacuum and compound ranges through 0 psig to 15,000 psig; absolute ranges from 0 psia to 15 psia through 0 psia to 100 psia
- Current and voltage outputs available
- 316 Stainless Steel and Elgiloy wetted parts
- CE compliant to suppress RFI, EMI and ESD
- NACE MR0175/ISO 15156 compliant
- NSI/ISA-12.27.01-2003 approved single seal

SPECIFICATIONS

Output signals	4 mA to 20 mA, 2-wire; 1 Vdc to 5 Vdc, 3-wire; 0.5 Vdc to 4.5 Vdc, 3-wire
Pressure ranges	Vacuum through 0 psi to 15,000 psi Absolute from 0 psia to 15 psia through 0 psia to 100 psia
Accuracy	±0.25% full scale (BFSL) (Includes the effects of non-linearity, hysteresis, non-repeatability, zero point and full scale errors)
Stability	≤±0.2% full scale for 1 year, non-accumulating
Response time	≤1 ms (between 10% and 90% full scale)
Service life	>100,000,000 load cycles
Temperature ranges	Compensated 32 °F to 176 °F (0 °C to 80 °C) Zero effect ±0.011% full scale/ °F Span effect ±0.011% full scale/ °F
	Media T6: -40 °F to 131 °F (-40 °C to 55 °C) T5: -40 °F to 158 °F (-40 °C to 70 °C) T4: -40 °F to 212 °F (-40 °C to 100 °C)
	Ambient T6: -40 °F to 140 °F (-40 °C to 60 °C) T5: -40 °F to 167 °F (-40 °C to 75 °C) T4: -40 °F to 221 °F (-40 °C to 105 °C)
	Storage -40 °F to 221 °F (-40 °C to 105 °C)
Power requirement*	10 Vdc to 30 Vdc (4 mA to 20 mA, 2-wire) 6 Vdc to 30 Vdc (1 Vdc to 5 Vdc, 3-wire, 0.5 Vdc to 4.5 Vdc, 3-wire) 14 Vdc to 30 Vdc (0 Vdc to 10 Vdc, 3-wire)
Load limitations	≤ (VPower-10)/0.020 Amp for 4 mA to 20 mA ≥ 10,000 Ω for 1 Vdc to 5 Vdc, 3-wire
Proof pressure	3 times full scale for ranges 0 psi to 15 psi through 0 psi to 200 psi 1.75 times full scale for ranges 0 psi to 300 psi through 0 psi to 10,000 psi 1.5 times full scale for 0 psi to 15,000 psi
Burst pressure	3.8 times full scale for ranges 0 psi to 15 psi through 0 psi to 200 psi 4 times full scale for ranges 0 psi to 300 psi through 0 psi to 10,000 psi 3 times full scale for 0 psi to 15,000 psi
Measuring element	621 Series is 316 Stainless Steel for ranges up through 0 psi to 300 psi, 316 Stainless Steel with Elgiloy ranges 0 psig to 500 psig and higher; 622 Series is 316 Stainless Steel with NBR o-ring; (FKM o-ring optional)
Connection	316 Stainless Steel
Housing material	316 Stainless Steel
Environmental rating	IP67
Electromagnetic rating	CE compliant to EMC norm EN 61326:2014/A1:1998 RFI, EMI and ESD protection
Electrical protection	Reverse polarity, over-voltage and short circuit protected
Shock	1,000 g's according to IEC 60068-2-27
Vibration	20 g's according to IEC 60068-2-6
Weight	Approximately 12 oz.

* Unregulated

APPLICATIONS

- Chemical processing
- Gas pressure measurement
- Oil field & offshore
- Mining
- Well head measurement

NOSHOK 621 and 622 Series transmitters are Factory Mutual and Canadian Standards Association approved for use in hazardous location applications as follows:

Explosion-proof with entity approved for: Class I, Division 1, Groups A, B, C and D. Dust Ignition-proof with entity approval for class II/III, Division 1, Groups E, F and G. Maximum electrical ratings 30V, 20 mA.

CE compliant with pressure equipment directive 2014/68/EU. ANSI/ISA-12.27.01, Approved single seal.



WARNING: This product can expose you to chemicals including Nickel, which is known to the State of California to cause cancer and birth defects or other reproductive harm. For more information go to www.P65Warnings.ca.gov

ORDERING INFORMATION				
SERIES	621 Stainless Steel threaded connection	622 316 Stainless Steel flush diaphragm	622H Hastelloy C flush diaphragm	
PRESSURE RANGES	30vac -30 inHg to 0 psig	5 0 psig to 5 psig	300 0 psig to 300 psig	6000 0 psig to 6,000 psig
	30/30 -30 inHg to 30 psig	10 0 psig to 10 psig	500 0 psig to 500 psig	8000 0 psig to 8,000 psig
	30/60 -30 inHg to 60 psig	15 0 psig to 15 psig	1000 0 psig to 1,000 psig	10000 0 psig to 10,000 psig
	30/100 -30 inHg to 100 psig	30 0 psig to 30 psig	1500 0 psig to 1,500 psig	15000 0 psig to 15,000 psig
	30/160 -30 inHg to 160 psig	60 0 psig to 60 psig	2000 0 psig to 2,000 psig	15A 0 psia to 15 psia
	30/200 -30 inHg to 200 psig	100 0 psig to 100 psig	3000 0 psig to 3,000 psig	100A 0 psia to 100 psia
	30/300 -30 inHg to 300 psig	200 0 psig to 200 psig	5000 0 psig to 5,000 psig	
	psig = gauge pressure psia = absolute pressure	Other ranges available on request	Note: 622 Series is available for pressure ranges up to 0 psig to 8,000 psig	
ACCURACY	1 ±0.25% full scale (BFSL)			
OUTPUT SIGNALS	1 4 mA to 20 mA, 2-wire	3 1 Vdc to 5 Vdc, 3-wire, low power	31 0.5 Vdc to 4.5 Vdc 3-wire, low power	
	2 0 Vdc to 5 Vdc, 3-wire	5 0 Vdc to 10 Vdc, 3-wire		
PROCESS CONNECTIONS	2 1/4" NPT male	11 G 1/2 B *		
	8 1/2" NPT male	13 G 1 B (622 Series only, <30 psig)		
ELECTRICAL CONNECTIONS	6 1/2" NPT male conduit with 6' integral cable		37 1/2" NPT male conduit with 6' flying leads with epoxy seal	
OPTIONS	ST8 Threaded Orifice (621 Series only)	20 20' Cable/lead (attached to electrical connection 6 or 37)	30 30' Cable/lead (attached to electrical connection 6 or 37)	

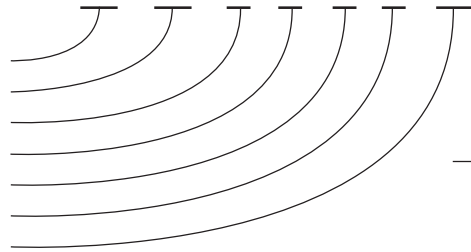
Please consult your local NOSHOK Distributor or NOSHOK, Inc. for availability and delivery information.

* 622 Series only, G 1/2 B Flush (≥ 30 psig).

EXAMPLE

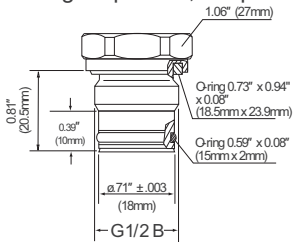
Series 621 Series
 Pressure range 0 psig to 500 psig
 Accuracy ±0.25% full scale (BFSL)
 Output signal 4 mA to 20 mA, 2-wire
 Process connection 1/2" NPT Male
 Electrical connection 1/2" NPT Male conduit with 6' integral cable
 Option Threaded Orifice

621 - 500 - 1 - 1 - 8 - 6 - ST8

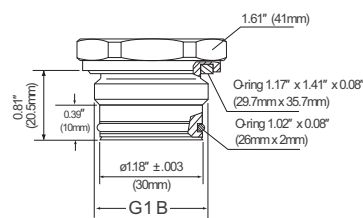


Front flush process connections

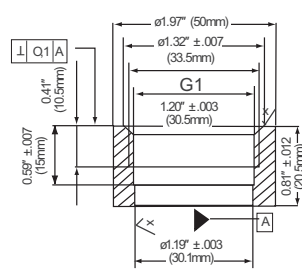
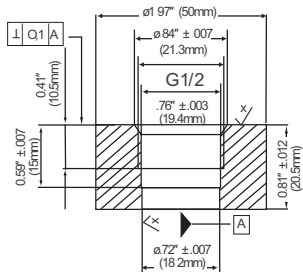
For ranges 0 psi to 30 psi through 0 psi to 8,000 psi



For ranges 0 to 30 psi and below



Flush corresponding port weld-on adapters



2-WIRE WIRING

+ Supply	Red
+ Output	Black
Ground	Gray

3-WIRE WIRING

+ Supply	Red
Common	Black
+ Output	Brown
Ground	Gray